

IT Practical Examination 2011-12 Installation Guide

Pre installation system requirements

Standard VIII

For Ubuntu IT@School version 9.10 and 10.04

Minimum free disk space : 500MB on the installation partition
Minimum screen resolution : 800 X 640

Standard IX

For Ubuntu IT@School version 9.10 and 10.04

Minimum free disk space : 500MB on the installation partition
Minimum screen resolution : 800 X 640
Microphone
Speaker

Standard X

For GNU/Linux IT@School (3.0, 3.2)

Minimum free disk space : 500MB on the installation partition
Minimum screen resolution : 800 X 640

For GNU/Linux IT@School version 3.8

Minimum free disk space : 500MB on the installation partition
Minimum screen resolution : 800 X 640

For Ubuntu IT@School version 9.10 and 10.04

Minimum free disk space : 500MB on the installation partition
Minimum screen resolution : 800 X 640

Contents of the Distribution

- itexam-2nd_term –Software for std VIII, IX, X Second Term IT Practical Examination 2011-12
- itexam-final – Software for std VIII, IX IT Practical Examination March 2012

Uninstalling the old software

Step 1

From the Desktop menu choose

Desktop/System → Administration → Synaptic Package Manager.

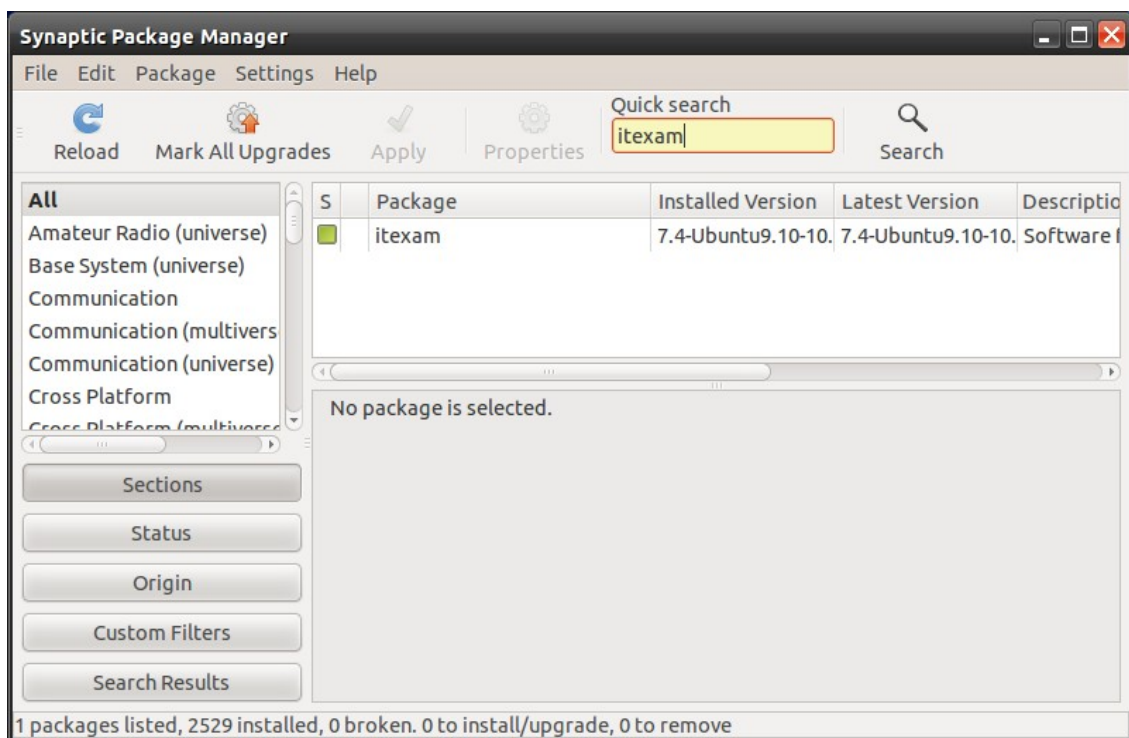
Step 2

The Synaptic Package Manager will now prompt you for the 'root' password.

Step 3

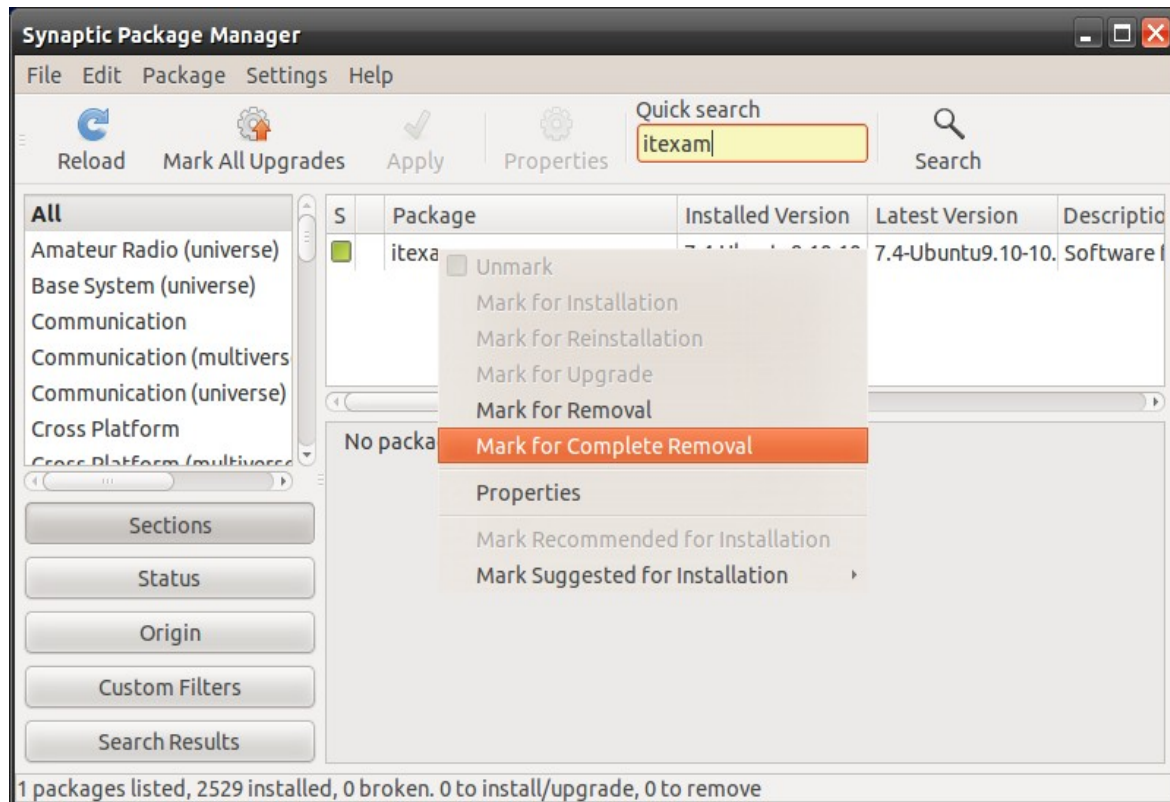
In the Synaptic Package Manager window, search for lower version of 'itexam' is there in the system or not.

So in the search box search for “itexam” .



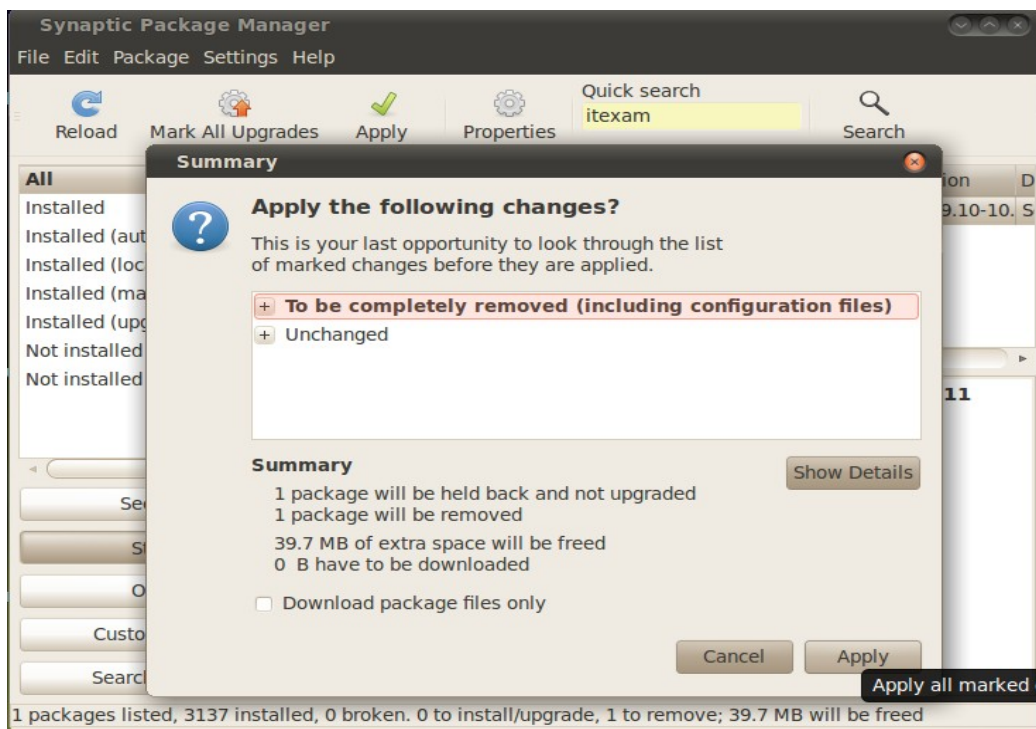
Step 4

Right click on the package and Mark as “Mark for Complete Removal”



Step 5

Click on Apply button for complete removal of the old package.



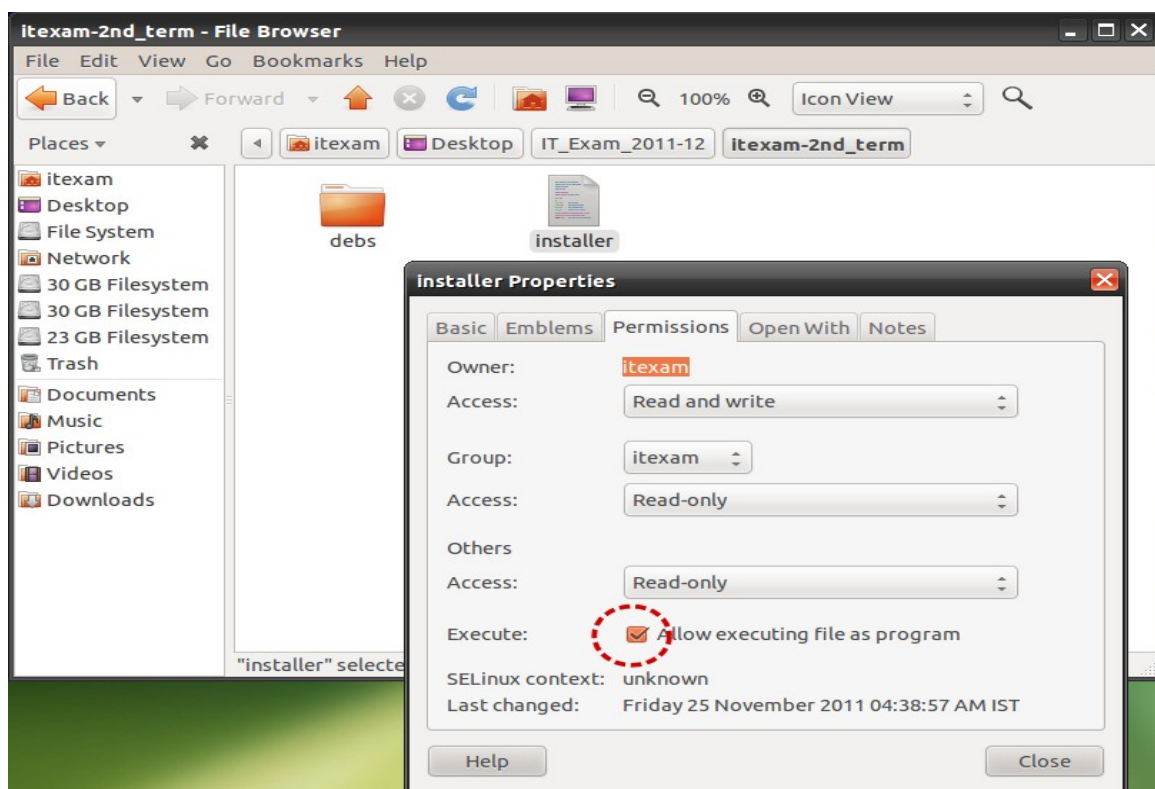
Installing the software

(Do not login as root , use Default user [the user created at the time of OS installation] for installing the itexam software and registering the school)

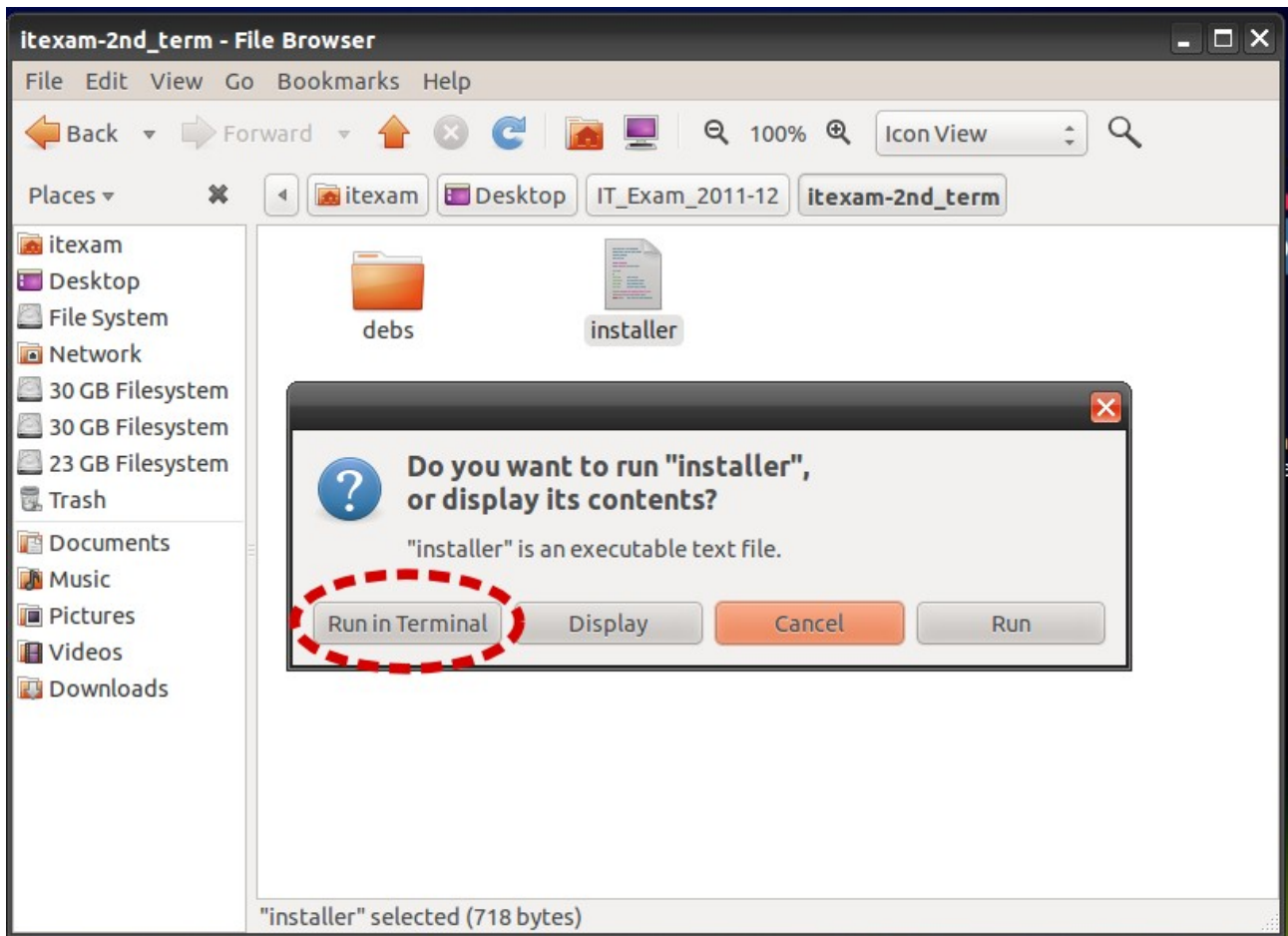
There is only one installer for all versions of OS (3.0, 3.2, 3.8 and ubuntu 9.10 , 10.04).

- Copy the folder 'itexam-2nd_term' and its contents for Second Term Examination and 'itexam-final' for Final Term from the examination software CD to your user's home folder .
- Open the pasted folder .
- Set execute permission to the file 'installer'

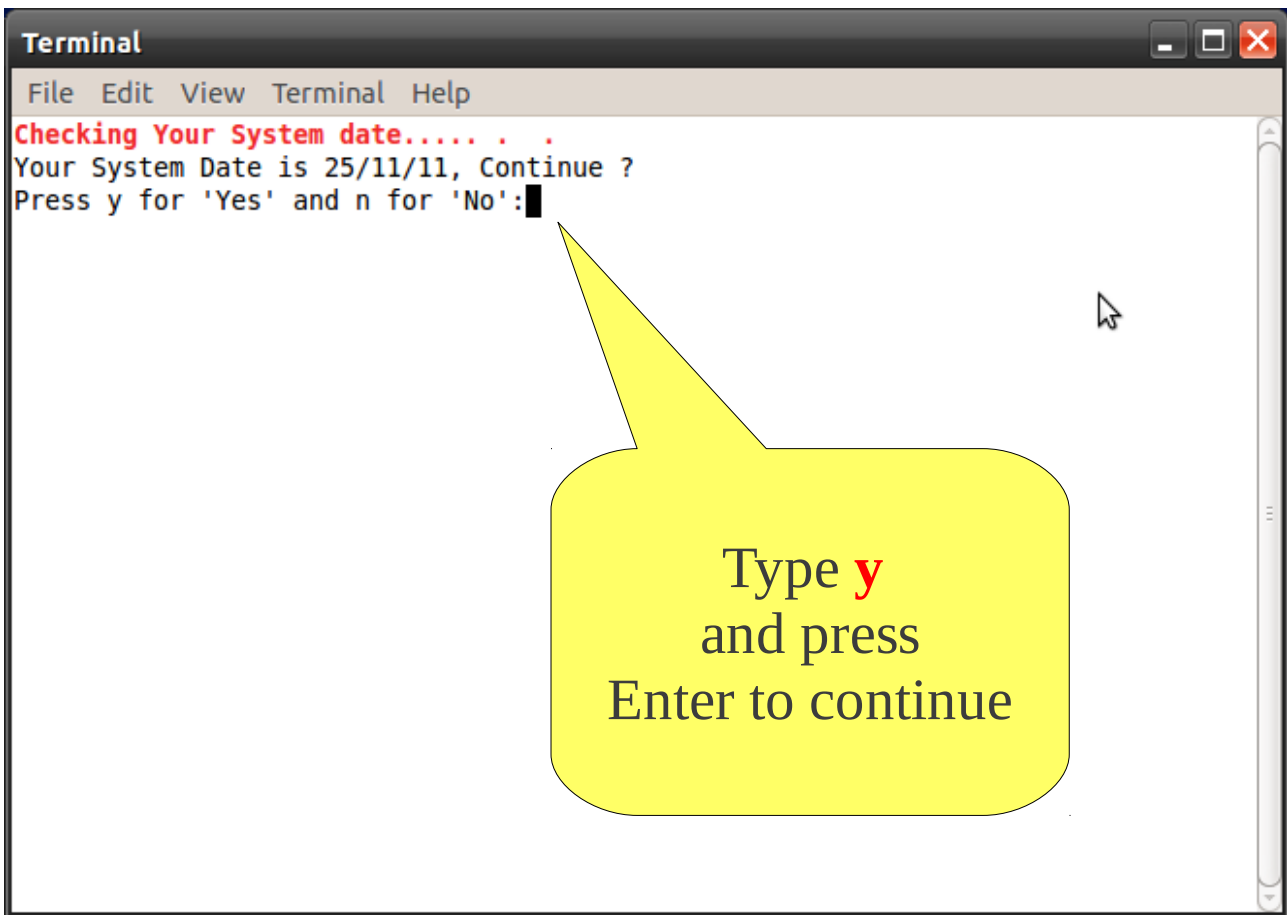
Right click on the file - properties - permissions – Check (execute/allow execute)- Close (see the screenshot below).



- Double Click the file 'installer' and click on 'Run in Terminal'



- **It will ask to Check your System date and if 'y' is pressed root password will be asked , then type the password and press enter , This will install the examination software. (Type First user password in the case of ubuntu)**



- School registration should be done in the default user .

(This topic is covered in the document titled **IT Practical Examination 2011-12 – User Guide**).

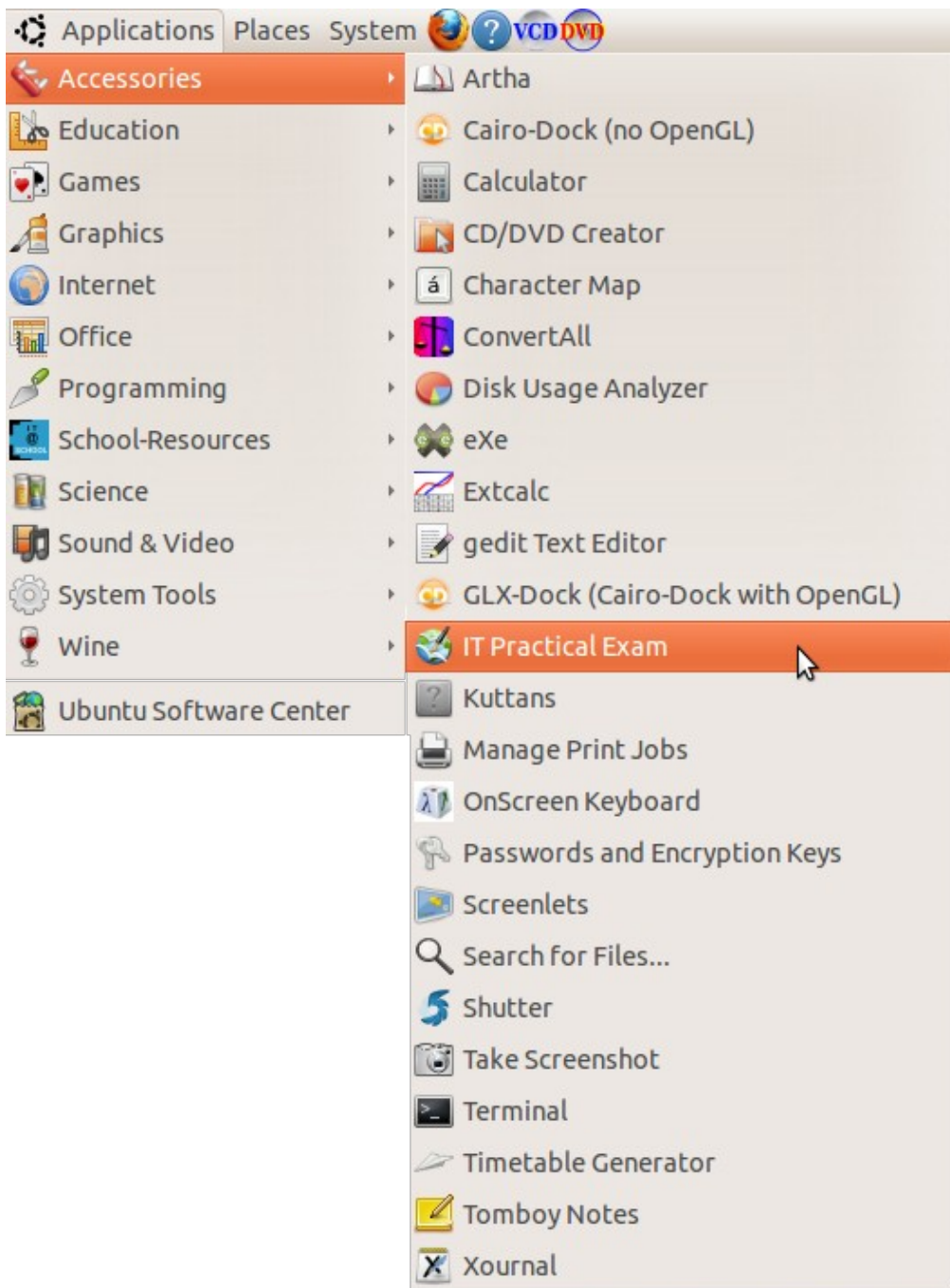
Now, **CREATE A NEW USER** for Conducting the Examination

Before running the 'itexam software', **Remove the folders Documents, Images8, Images9, Images10, exam8, exam9, exam10** from the **home** folder, if they exist.

Runnig the software

After login in New User

Select: Applications -->Accessories -->IT Practical Exam.



After the IT Practical Exam software has been selected from the above sub-menu, you will see the following icon corresponding to the IT Exam program on your desktop.

